

॥ श्री १ ॥

Let's renovate your living



**SHIVAM**

V A T I K A

2 BHK LUXURIOUS FLAT & SHOPS





*Let's renovate your living*



# SHIVAM VATIKA

**2 BHK LUXURIOUS FLAT & SHOPS**

Greet the morning sun, relish the even skies or simply cherish the vibrant cityscapes while relaxed in the comfort of your luxurious balcony. Such is the life at Shivam Vatika, a hearty high rise, in the core of the city. A brilliantly designed 2 BHK luxurious flats & Shops redefined lifestyle for a modern family. Designed for people who are looking for something unique and elegant at developing area Vinzol. It has all elements to give you a grand lifestyle and quality living at the same address. Moreover, Not only shops are also there, to make your shopping destination near by.

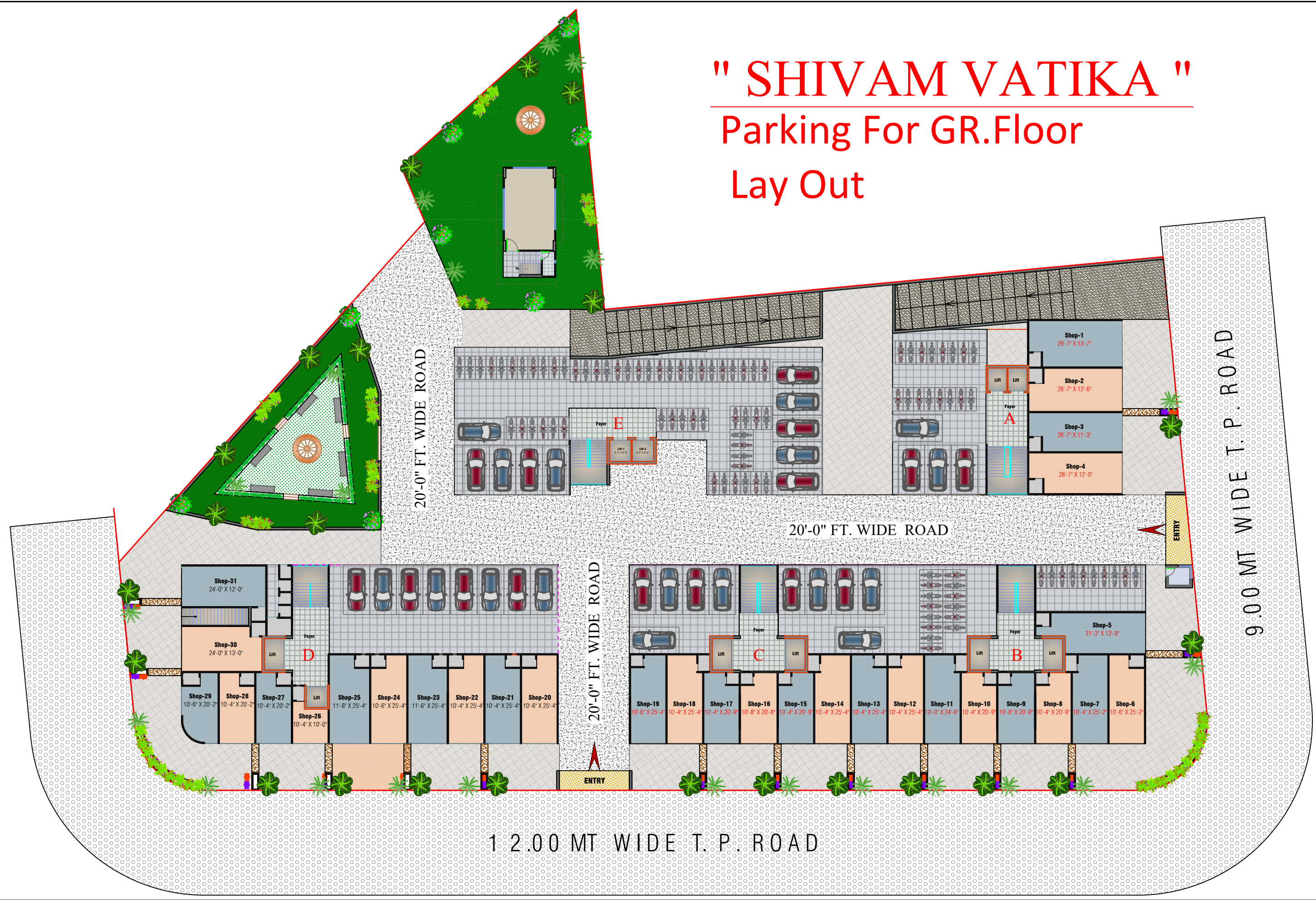
Furnished with all the modern amenities, Shivam Vatika offers a contemporary living experience with the best value in the every wall, fitting and furnishing that is outfitted with. Apart from breath taking surroundings, has a layout that provides easy access to all top facilities.



# " SHIVAM VATIKA "

## Parking For GR.Floor

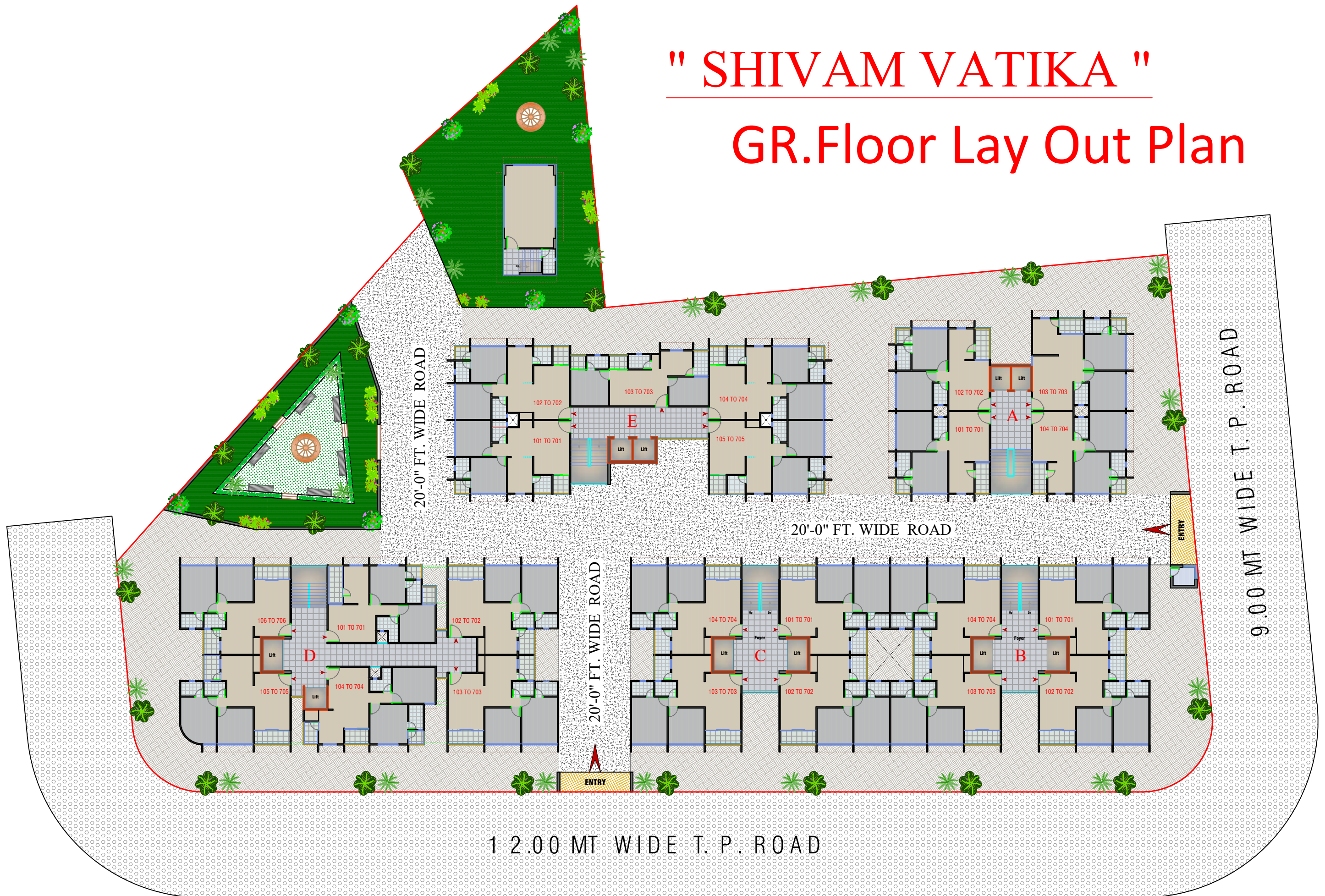
### Lay Out





# " SHIVAM VATIKA "

## GR.Floor Lay Out Plan

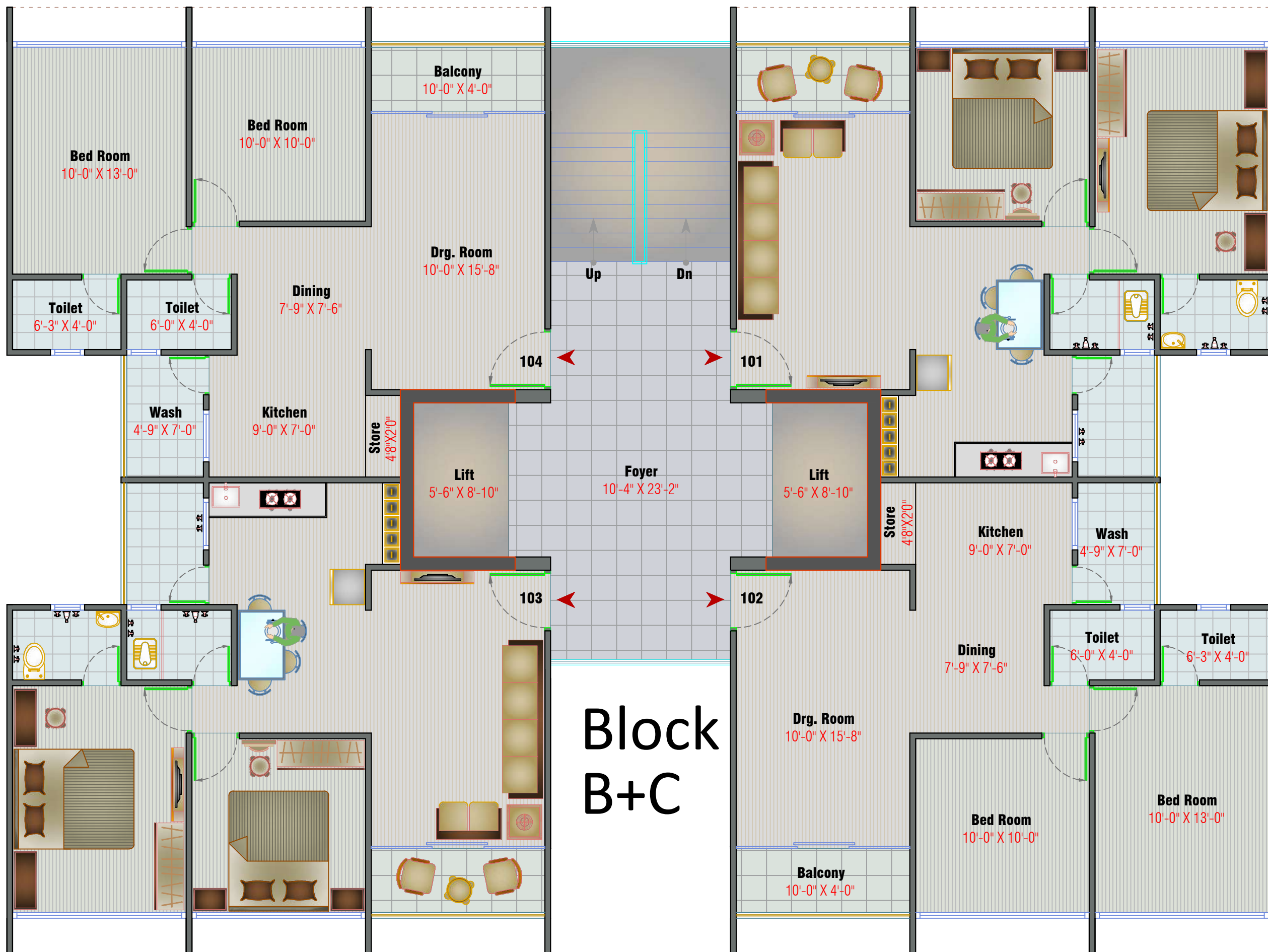




# Block A





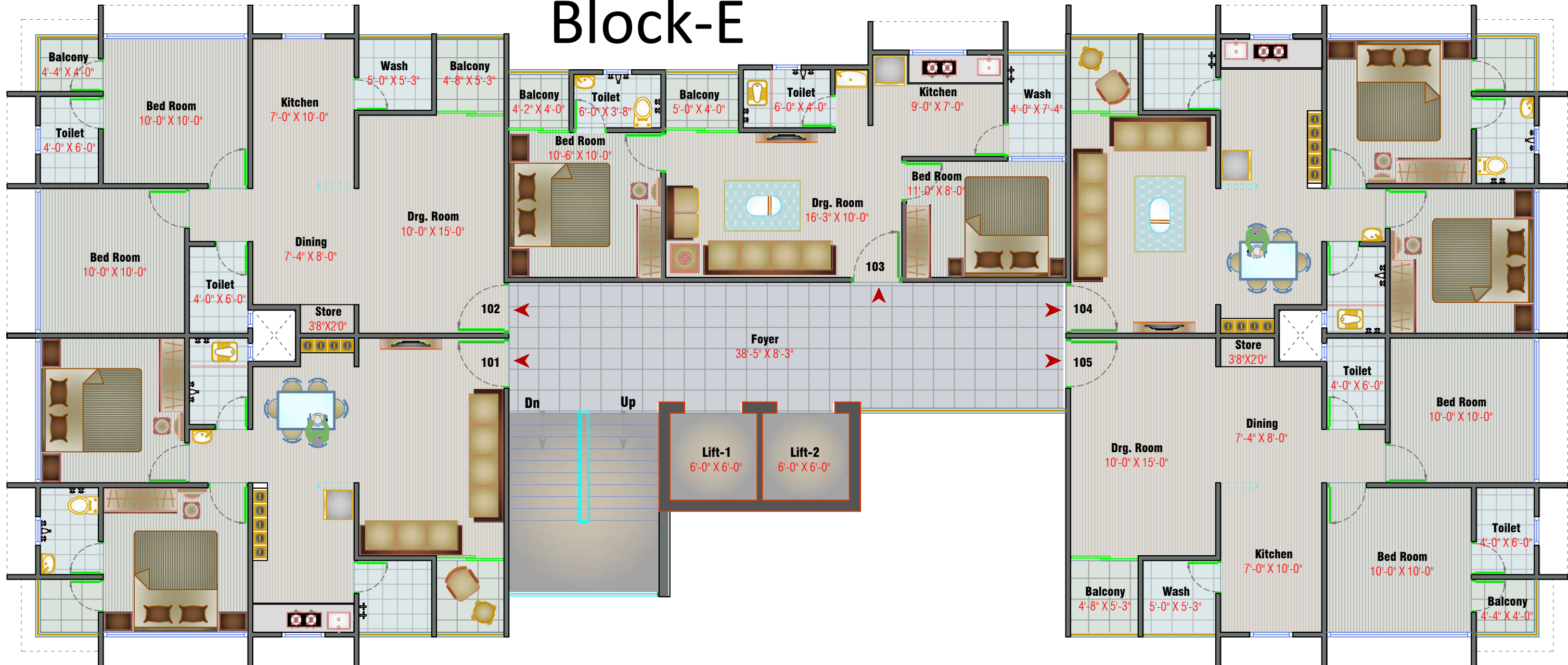


# Block B+C



[illegible]

# Block-E





## 100% LOAN PAPERS









*Step in....*

as a new whole world awaits you where nature  
meets luxury to create the finest of living experiences.









*A place...*

where happiness is heightened and  
memories highlighted with utopian spaces











*Where living*

has to be larger than  
life and the best amenities are  
accessible within blink of an eye.







# SHIVAM

## VATIKA

2 BHK LUXURIOUS FLAT & SHOPS

### *Comfort and Elegance*

Designed to suit your modern lifestyle these homes are spacious, yet compact and easy to maintain. Two-bedroom home is the perfect space for a small family. It is planned this space to give you a feeling of openness, yet keep it private.



*Each Floor Only Four Flats*



# AMENITIES



**ATTRACTIVE MAIN GATE**



**CCTV CAMERA**



**24X7 HOUR SECURITY**



**FREE BASEMENT PARKING**



**RCC ROAD**



**COMMON PLOT**



**CHILDREN PLAY AREA**



**COMMUNITY HALL**









## SPECIFICATIONS

## STRUCTURE

# RCC Frame Structure Earthquake Resistant Structure Design.

## PLASTER

Internal Mala Plaster with Putty Design  
External Double Coat Sandface  
Plaster with Acrylic Paint.

## FLOORING

### Vitrified Tiles in Entire Flat.

## KITCHEN

Granite Top Sandwich Platform  
with SS Sink Glazed Tiles Dado On  
Platform Upto Lintel Level.

## TOILETS

Wall and Floor Tilling Branded  
Bath And Sanitary Fittings.

## STORAGE

Dedicated Storage Space.

## ELECTRIFICATION

Concealed Copper Wiring with  
TV, AC & Adequate  
Points with Modular Switches  
ELCB & MCB Switches in Each Flat  
Geyser Points in all Bathroom  
RO Water Point in Kitchen.

## DOORS/ WINDOWS

Decorative Main Entrance  
Door All other Decor Frame  
with Flush Door Fully Glazed  
Aluminum Windows.

## WATER SUPPLY

Common Underground Water Tank  
For Domestic Water Use Overhead  
Water Tank Per Block.

## PARKING

Basement Parking  
& Hollow Plinth Parking.

## TERRACE

Branded Tiles in Terrace for Water Proofing & Heat Reduction.

## LIFTS

Branded Lift in Each Block.

## FIRE SAFETY

Fire Safety Per Block.

## GAS CONNECTION

Adani PNG Connection.

## SECURITY SYSTEM

CCTV Surveillance System.

**Note:**

(1) The developers reserve the right to change or revise or make any modifications, additions, omissions or alterations in the scheme as a whole or any part thereof or any details therein, at their sole discretion without any prior notice, such changes would be binding to all the members. (2) Members will be binding to pay the expenses for Documentation, GST Charges as well as other legal charges as and when required, separately. (3) Members will be binding to pay the agreed amount at agreed time. If the payment is not done timely, the membership will be automatically dismissed and working expenses will be deducted from the paid amount. Once the new Membership is made the amount will be returned. (4) No changes will be allowed on the outside elevation. Also, for the technical matters an Architect is appointed whose decision will be binding. (5) All the architectural and interior views in brochure are computer graphics simulated interpretation of the actual property. (6) After the maintained deposited during the time of Possession, as agreed, all the members have to pay 12 months maintenance in advance. (7) This brochure is just for an easy presentation of the project and should not be treated as a legal document.



DEVELOPERS

SHIVAM CONSTRUCTION CO.

ARCHITECTURE & ENG.

ARTH DESIGN



STRUCTURALS ENG.

SHREEJI STRUCTURALS

**SHIVAM**  
V A T I K A

2 BHK LUXURIOUS FLAT & SHOPS

Nr. Sarthi Heritage, B/h. True Value Showroom,  
Nr. Hathijan Circle, S.P. Ring Road, New Vinzol, Ahmedabad - 382445

Email : shivamvatika.2222@gmail.com

**98988 13222, 95580 03222**